

# PROFILE CARDS

## PROFILE CARD

### Delivery Worker



You are a delivery worker. Your income depends on the number of deliveries available each day. You have access to *health insurance*.

₹500

## PROFILE CARD

### Migrant Worker



You are a migrant worker who has recently moved to the city for work. You do not have access to any subsidies.

₹400

## PROFILE CARD

### Street Vendor



You are a street vendor and your income depends on daily sales and access to public spaces. You do not have access to any subsidies.

₹400

## PROFILE CARD

### Waste Worker



You are a waste worker. You have access to *subsidised public transport*.

₹450

## PROFILE CARD

### Farmer



You are a farmer dependent on seasonal income. You do not have access to any subsidies.

₹550

## PROFILE CARD

### Construction Worker



You are a construction worker. You have access to *food subsidy (ration)*.

₹450

# NEED CARDS

NEED

## Monthly Food Expenses

If your profile says access to food subsidy (ration), pay only ₹40



₹80

NEED

## Daily Travel/ Bus Pass

If your profile says access to subsidised public transport, pay only ₹30



₹60

NEED

## Mobile Recharge/ Basic Internet



₹40

NEED

## Doctor Visit & Medicines

If your profile says access to health insurance, pay only ₹20



₹90

NEED

## School Books & Stationery



₹60

NEED

## Water Purchase During Shortage



₹70

NEED

## House Rent/ Home Contribution



₹100

NEED

## Cooking Gas/ Fuel



₹80

# WANT CARDS

WANT

## Eating Outside With Friends



₹50

WANT

## New Clothes Or Footwear



₹80

WANT

## Extra Mobile Data Pack



₹40

WANT

## Movie/ Online Entertainment



₹60

WANT

## Online Course/ Skill App



₹70

WANT

## Festival Or Celebration Expense



₹60

WANT

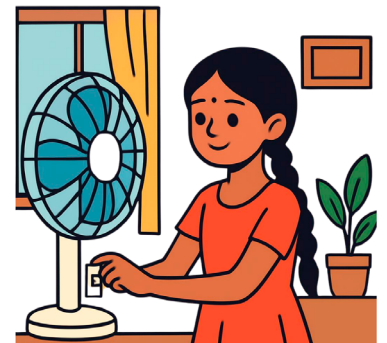
## Sports Gear/ Hobby Item



₹70

WANT

## Room Comfort Item



₹50

# SURPRISE CARDS (+)

SURPRISE +

## Government Scholarship Or Benefit



+₹30

SURPRISE +

## Ration Support During Price Rise

(Ration-access profiles only)

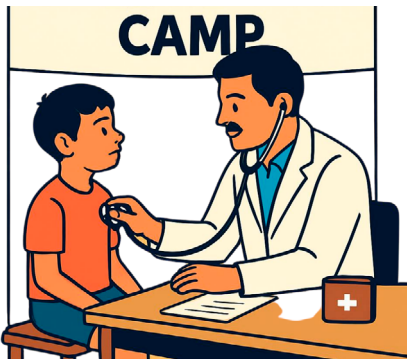


+₹30

SURPRISE +

## Free Health Camp

(No effect if profile already has access to health insurance)



+₹40

SURPRISE +

## Part-Time Work



+₹50

SURPRISE -

## Sudden Medical Expense

(Rs 50 only if your profile says access to health insurance)



-₹120

SURPRISE -

## Loss Of Income For A Few Days Due To Floods

(All players)



-₹80

SURPRISE -

## Increase In Food Prices

(Rs 40 only if your profile says access to food subsidy (ration))



-₹80

SURPRISE -

## Emergency Travel



-₹70

# Play Money ₹100 Denomination



# Play Money ₹50 Denomination



# Play Money ₹20 Denomination







FINISH START	 WANT	WANT	 NEED	WANT	 SURPRISE	WANT	 NEED	WANT	 SURPRISE							
	 NEED	<h1>Need vs Want</h1> <h2>Market Place</h2> 							WANT							
	WANT								 NEED							
	 SURPRISE								WANT							
	WANT								 SURPRISE							
	 WANT								WANT							
	 NEED								 WANT	 SURPRISE						
	NEED								WANT	WANT						
	 WANT								WANT	 NEED	WANT	 SURPRISE	WANT	 NEED	NEED	 WANT