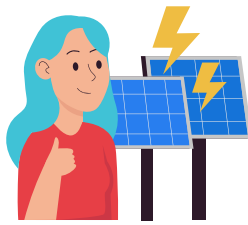




# TIME OF DAY (TOD) SOLAR ENERGY FEED-IN TARIFF

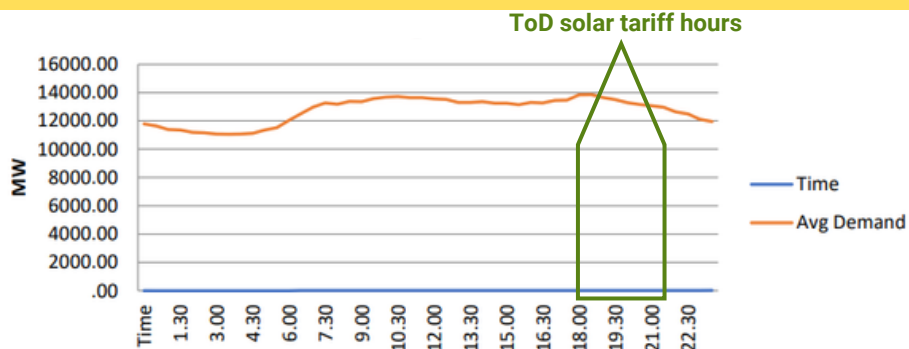


## 01 WHAT IS THE TOD SOLAR ENERGY FEED-IN TARIFF?

- Time of day tariff is the 20% higher tariff than the proposed LCOE (Levellised Cost Of Energy) based tariffs,
- Applicable to the solar energy injected into the grid during the evening peak hours between 6pm and 10pm.

## 02 AIM

- To promote the uptake of grid-interactive prosumer energy storage systems.
- To encourage solar energy prosumers (producer + consumer) to feed energy into the grid when energy demand is high.



The average demand curve for the FY 2021-22 | Chart Source: TNERC Tariff Order 2022

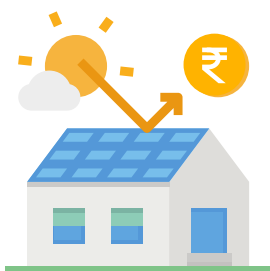
## ToD feed-in tariffs:

SYSTEM CAPACITY	LEVELLISED FEED-IN TARIFFS (Rs)*	ToD FEED-IN TARIFFS (Rs)*
Upto 10 kW	3.61	20% of 3.61 = 4.33
From 11 to 150 kW	3.37	20% of 3.37 = 4.04
From 151 to 999 kW	3.10	20% of 3.10 = 3.72

\* According to TNERC's 2021 Tariff Order

## 03 WHO BENEFITS?

- Applicable for prosumers under the following categories, who have installed energy storage component like battery in their solar photovoltaic(PV) system -
- LT-II-B(1), LT-IIB(2) - Educational Institutions & its hostels, hospitals
- LT-III-B - Industries, Information technology services
- LT-V - Miscellaneous /General purpose (that are not covered under other LTs)
- all HT categories (except HTIIA (Lift irrigation), HT-V (EV-PCS) and HT-IV)



## 04 HOW IS IT QUANTIFIED?

Using the bidirectional ToD energy meter that has programmable ToD registers.